



# **FACILITY MASTER PLAN**

## **Staff Engagement Session**

### **School Community Rebuild Update**

### **Wednesday, March 6, 2024**



# Tonight's Agenda

- New Build Update
- Swing Space
  - Move Plan
  - Walkthroughs (Staff & Families)
  - Transportation Plan
- Questions & Answers





# PROGRAM COMPARISON

## CURRENT

Building	SF	Students	Capacity
PRMX	54,400	439	500

## BOARD APPROVED

Building*	SF	Student Capacity	Construction Budget
PRMX	75,000	500	\$29,000,000

## SCHEDULE OVERVIEW\*

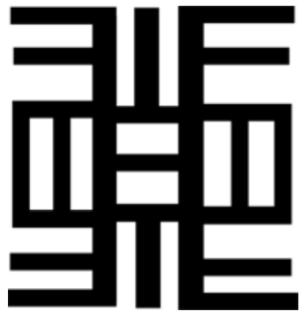
Planning	Start: April 2023	Complete: September 2023
Design / Bidding	Start: September 2023	Complete: March 2025
Construction	Start: April 2025	Complete: August 2027

\*Estimated Hard Construction Cost and Schedule subject to verification based on current market conditions.



## Layout Inspiration

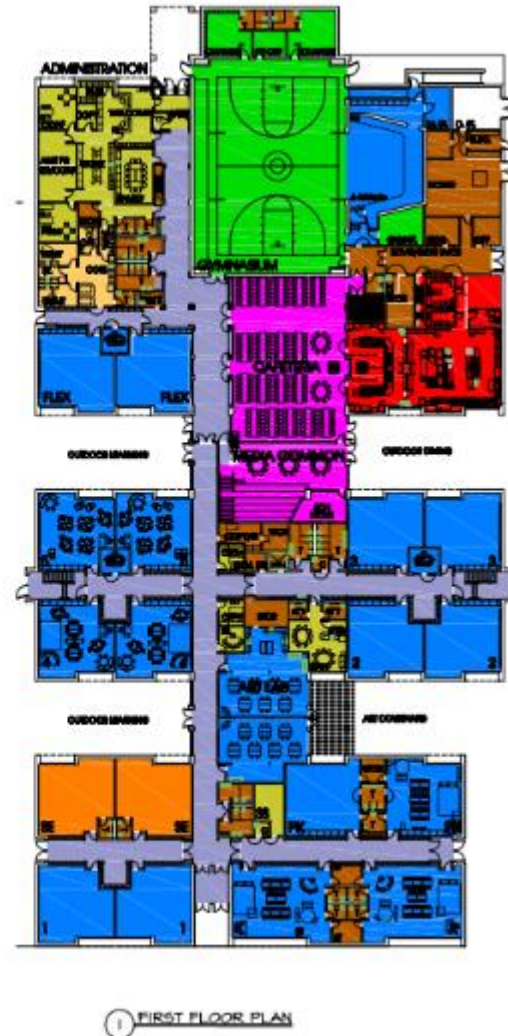
**NEA ONNIM**  
**Adinkra Symbol**



**(S)he who does not  
know can know from  
learning**


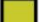




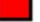





**Level 2**



**Level 1**

# Floor Plan & Program Elements

	KEY	TOTAL SQUARE FOOTAGE: 71,000 S.F.	
	ADMIN/SUPPORT		PHYSICAL EDUCATION
	HEALTH CENTER		COMMON SPACES
	CLASSROOMS		FOOD SERVICE
	ESE CLASSROOMS		CIRCULATION
	BUILDING SUPPORT		

- **Secured Vestibule Entrance**
- **24 Classrooms** (900-950 SF each)
- **1 Science Lab** (1,400 SF)
- **6 Specialty Rooms**
  - 1 Music Room
  - 1 K – 5 Elective Room
  - 1 Art Lab
  - 1 Health Suite
  - 1 Family & Volunteer Center
  - 1 Harambe Room & Learning Stairs
- **Gymnasium** (5,200 SF)
- **Student Courtyards**
  - Outdoor Learning/Studying
  - Outdoor Dining
  - Art Courtyard
- **Play Spaces**
  - Separate PK Playground
  - 5 – 12 Playground

**Total Square Footage: 71,000 SF**

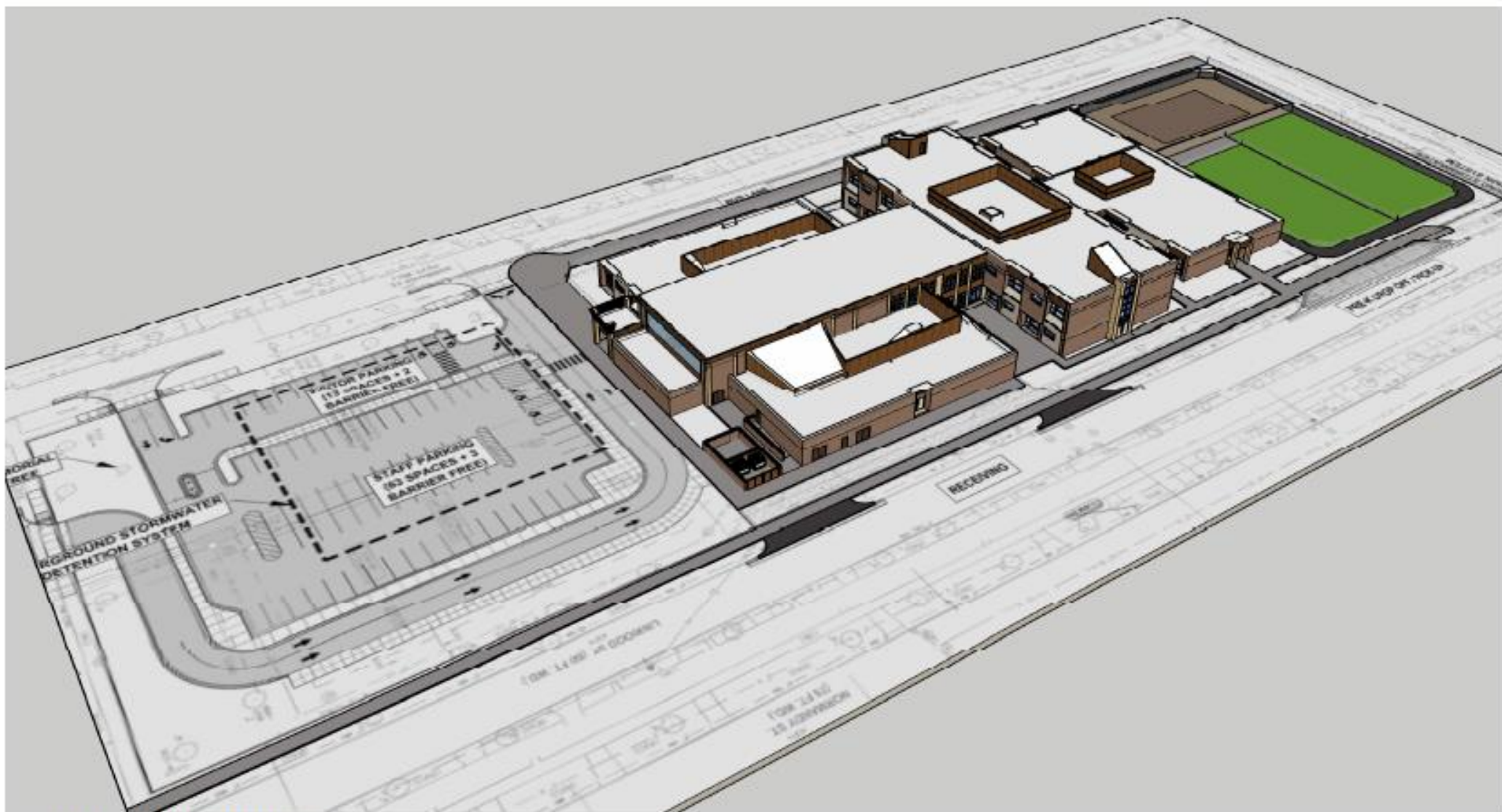
# Exterior



**MAIN ENTRY**



# Exterior



AERIAL FROM NORTHWEST



# Exterior

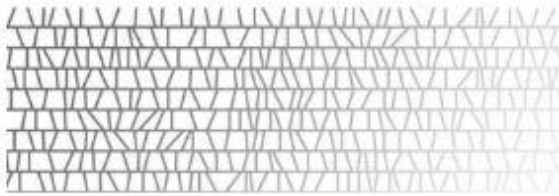


NORTH AND EAST ELEVATIONS FROM GROVE/NORMANDY



# PRMX

## Acrylic Panel:



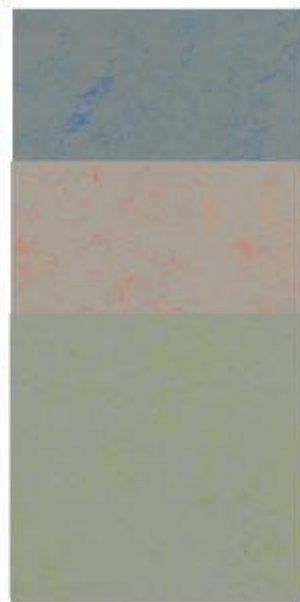
## Laminates:



## Solid Surface:



## Marmoleum:



## Wall Tile:



## Neutral

SW 7551  
Greek Villa

## Middle School

SW 6795  
Major Blue

## Lower Elem

SW 6884  
Obstinate Orange

## Upper Elem

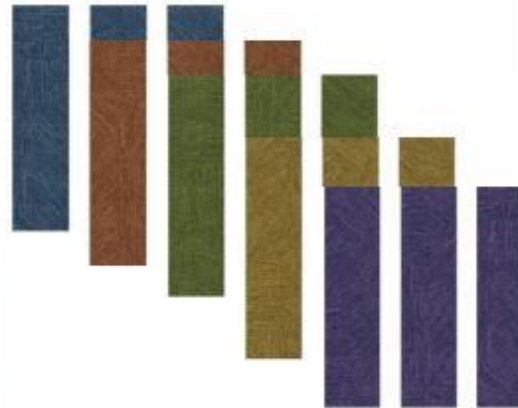
SW 6921  
Electric Lime

SW 6767  
Aquarium

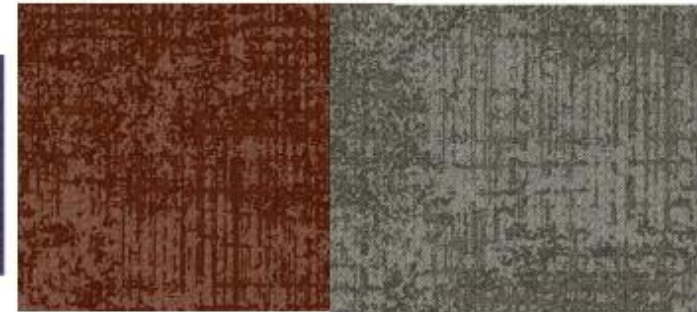
SW 6982  
African Violet

SW 6890  
Osage Orange

## Flotex:



## Kinetex:



## LVT:



## Taraflex:



## Base:



## Walk-off Carpet:





# PRMX

## Adinkra Symbols:



Adinka Symbols to  
be vetted by school.

### Creativity:



### Knowledge:



### Strength:



### Leadership:



### Wisdom:



## Acoustical Panels:



## Wallcovering:



## Reception Desk





## Servery



## Cafeteria



Historical figures and quotes  
to be vetted by school.



## Learning Stair





# Great Hall



Andika Symbols to  
be vetted by school.





## Gymnasium





**Gymnasium-Stage**



**Gymnasium-Stage Open**



### Middle School Classroom Corridor



 **KINGSCOTT**

### Middle School Small Group Room



 **KINGSCOTT**



### Middle School Classroom



### Middle School Classroom





**Upper Elem. Classroom Corridor**



 **KINGSCOTT**

**Upper Elem. Small Group Room**



 **KINGSCOTT**

## Upper Elem. Classroom



## Lower Elem. Classroom Corridor





## Lower Elem. Lockers



**Lower Elem. Classroom**



**Lower Elem. Classroom**





## Art Room



## Art Room





# Building Site Design Principles



## PRMX Site Context

- Linwood Ave.
- Strong neighborhood feel
- Integration into neighborhood fabric
- Architectural character
- Neighborhood “fit” and feel
- Proximity to Linwood Ave.
- Points of Site Entry

All design concepts are measured by how they impacts site safety for students and staff.

## Key Factors:

- Safe pathway for students and families walking to school
- A separation of student drop-off and bus traffic
- A safe and efficient vehicular traffic pattern on the site
- Separate parking areas for staff and visitors
- Safe access for students from school to playgrounds and other outdoor areas
- Integration of traffic patterns into neighborhood streets with safe ingress and egress





# PRMX to Former CMA



# Important Topics

## Transportation – Plan is in development

- Students will be picked up by bus from their current corner stop.
- Shuttles will be provided to students from the current location to CMA location.
- Shuttles will be provided for parents and families. Further instructions will be provided.
- Students who do not ride transportation will be transported to the school by their current means of transportation.

## Site Visit – 14771 Mansfield St.

- Staff Walkthrough – **Monday, May 20 @ 4:15 – 4:45 PM**
- Parent & Family Walkthrough – **Tuesday, May 21 @ 4:15 – 4:45 PM**

## Summer Site

- Main office will relocate to site after last day of school to support summer enrollment etc.





# Thank You!



# Move Process: What to Expect

## Purging of Item – (March 2024 – April 2024)

- Warehouse staff will meet with Principal Robinson to review the purging process.
- Clean-out plan and process will be shared in an upcoming staff meeting.
  - Staff will identify items that are not be needed by end of April.
- Roll-off dumpster will be on-site beginning May 1st.

## Packing District Issued items

- Instructional move package will be shared with staff prior to Spring Break.
- Packing training session will occur during an upcoming staff meeting prior to May 1<sup>st</sup>.
- District purchased items will relocate to the swing-space
  - Desks, teacher chairs, etc.

## Personal Belongings

- Instructions for personal items will be included in the move packet.

**All items must be removed by June 11. There will be no re-entry into the building after this date.**