

REBUILDING DPSCD

BRICK

BY BRICK



Paul Robeson Malcolm X Academy Meeting

SEP
5

Mumford High School

17525 Wyoming Detroit, MI 48221

5:00 PM - 6:15 PM

FACILITY MASTER PLAN
**ENGAGEMENT
MEETING**

DETROITK12.ORG/FMP





WELCOME

FACILITY MASTER PLAN
**ENGAGEMENT
MEETING**

DETROITK12.ORG/FMP





Tonight's Agenda

- New Build Update
- Construction
 - Project Overview
 - Timelines
 - Logistics
- Questions & Answers





Meet Your District Presenters



Machion Jackson
Deputy Superintendent of
Operations



Cleveland "Mike" Simmons
Executive Director of
Facilities & Capital Projects



Kidest Albaari
Senior Director of Capital Projects



Chatoris Jones
Senior Director of Operations





Meet Your Owner's Representatives



Nicole Blocker
Plante Moran
Realpoint
Program Manager



Tony Thomas, PE
Plante Moran Cresa
Project Manager



Kim Dokes
Dokes Design
Architecture LLC
Project Manager



Salam Rida
Dokes Design
Architecture LLC
Project Manager



David Esparza
AECOM
Project Manager



Tarolyn Buckles
Onyx Enterprises
Project Manager





Meet Your Design & Construction Team



Brendon Pollard
Kingscott
Principal,
Director of Planning and
Design



Sami Szeszulski
Kingscott
Project Manager



John Davids
Kingscott
Senior Design Architect



John Abela
SDG Associates
Director of Design



Ed Bloom
Rockford
Project Executive



Adam Al-Ansari
Rockford
Project Manager



Gabryelle Giddens
Rockford
Assist. Project Manager





PROGRAM COMPARISON

CURRENT

Building	SF	Students	Capacity
PRMX	54,400	439	500

BOARD APPROVED

Building*	SF	Student Capacity	Construction Budget
PRMX	~75,000	500	\$29,000,000

SCHEDULE OVERVIEW*

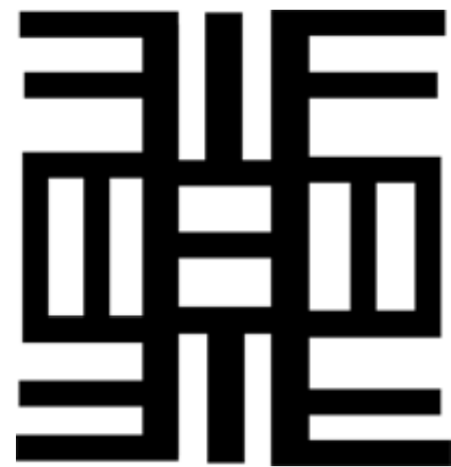
Planning	Start: April 2023	Complete: September 2023
Design / Bidding	Start: September 2023	Complete: March 2025
Construction	Start: April 2025	Complete: August 2027

*Estimated Hard Construction Cost and Schedule subject to verification based on current market conditions.



Layout Inspiration

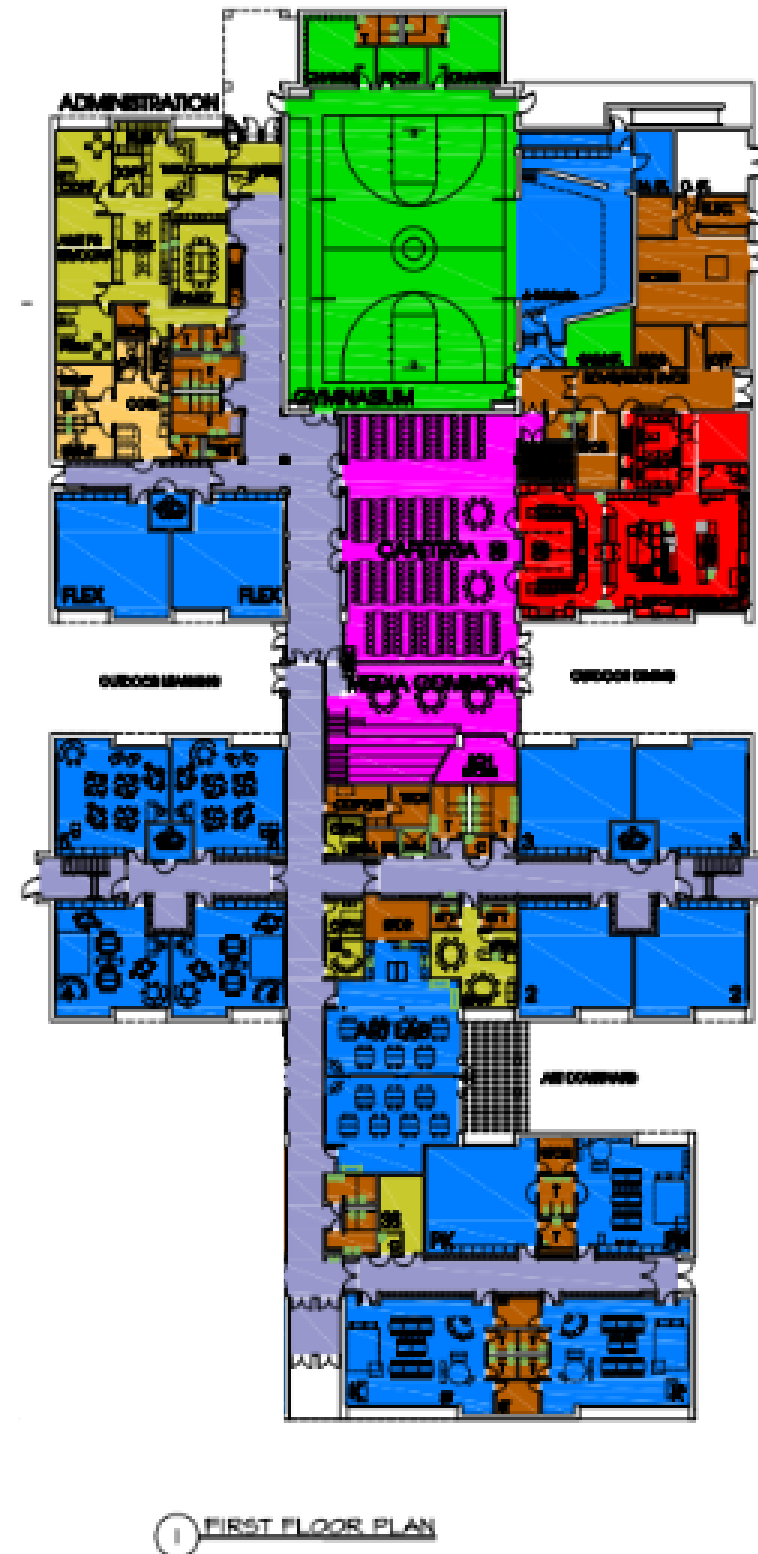
NEA ONNIM
Adinkra Symbol



**(S)he who does not
know can know from
learning**



Level 2



Level 1

Floor Plan & Program Elements

	KEY	TOTAL SQUARE FOOTAGE: 71,000 S.F.	
	ADMIN/SUPPORT		PHYSICAL EDUCATION
	HEALTH CENTER		COMMON SPACES
	CLASSROOMS		FOOD SERVICE
	ESE CLASSROOMS		CIRCULATION
	BUILDING SUPPORT		

- **Secured Vestibule Entrance**
- **24 Classrooms** (900-950 SF each)
- **1 Science Lab** (1,400 SF)
- **6 Specialty Rooms**
 - 1 Music Room
 - 1 K – 5 Elective Room
 - 1 Art Lab
 - 1 Health Suite
 - 1 Family & Volunteer Center
 - 1 Harambe Room & Learning Stairs
- **Gymnasium** (5,200 SF)
- **Student Courtyards**
 - Outdoor Learning/Studying
 - Outdoor Dining
 - Art Courtyard
- **Play Spaces**
 - Separate PK Playground
 - 5 – 12 Playground

Total Square Footage: 71,000 SF



Main Entry



Great Hall



GYMNASIUM

Gymnasium





Cafeteria

*Concept Furniture



Cafeteria – Learning Stair





Pre-K & K - Corridor



Kindergarten Classroom

*Concept Furniture



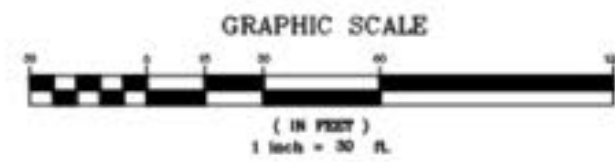
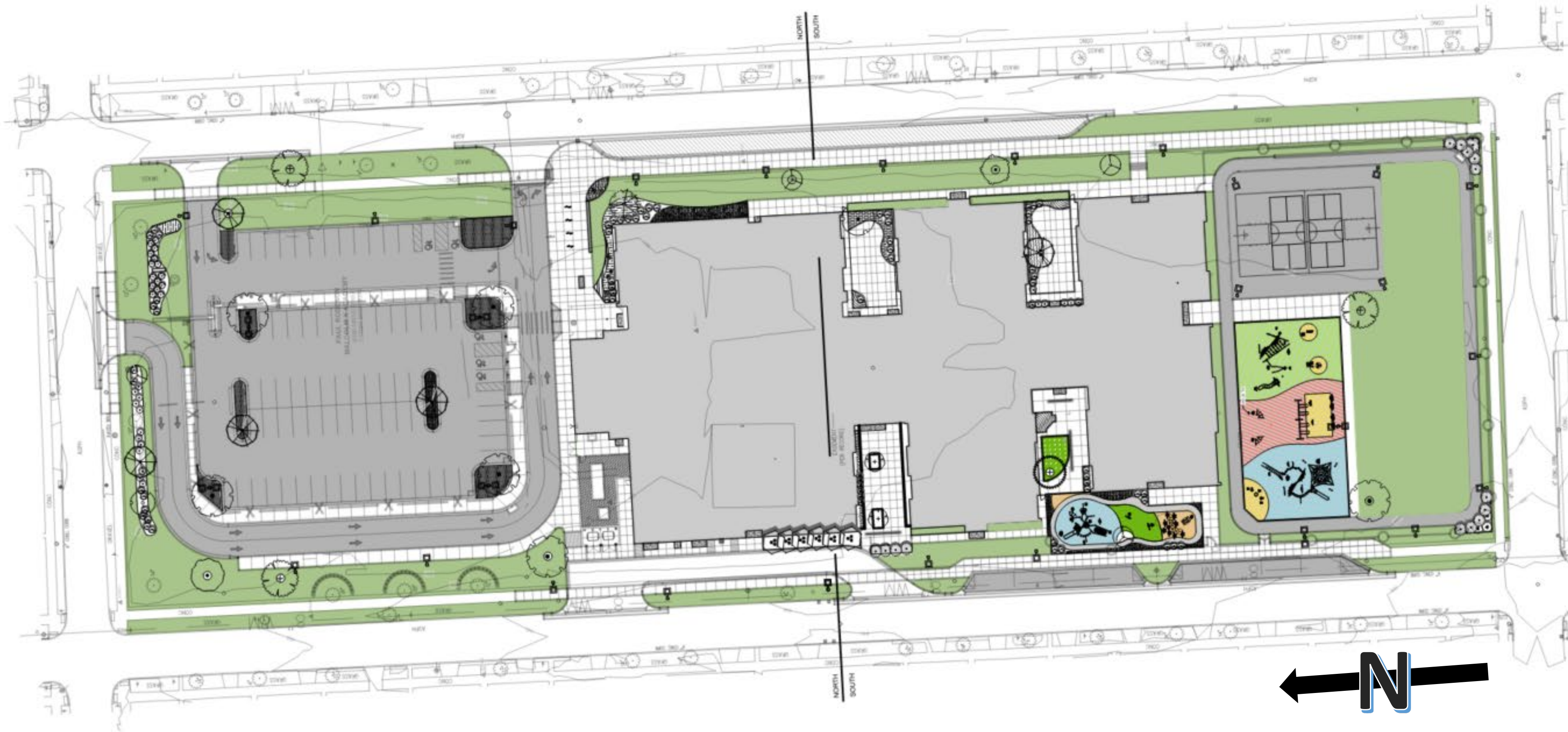
Upper Elementary Classroom

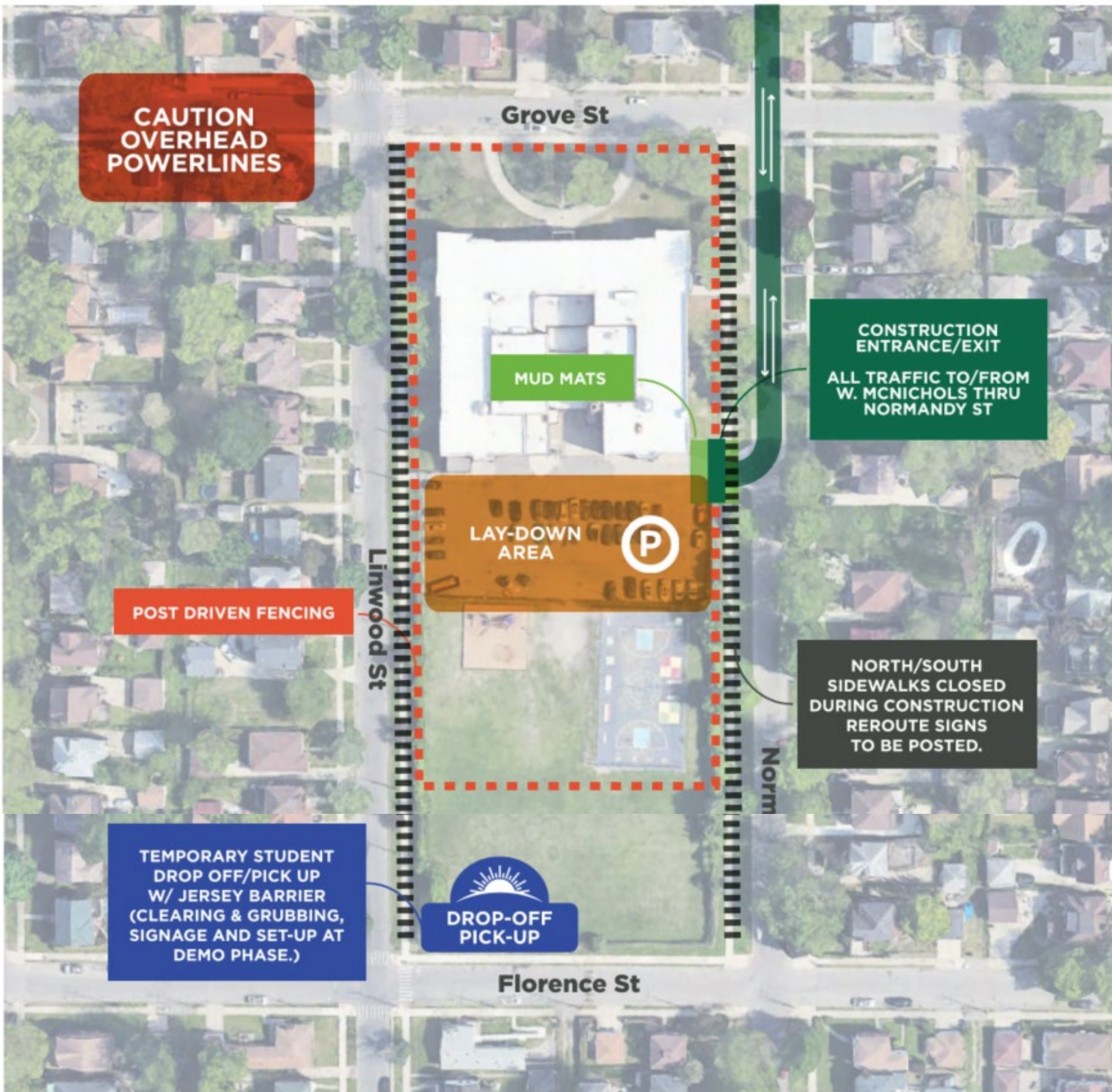
*Concept Furniture

Middle School Classroom

*Concept Furniture

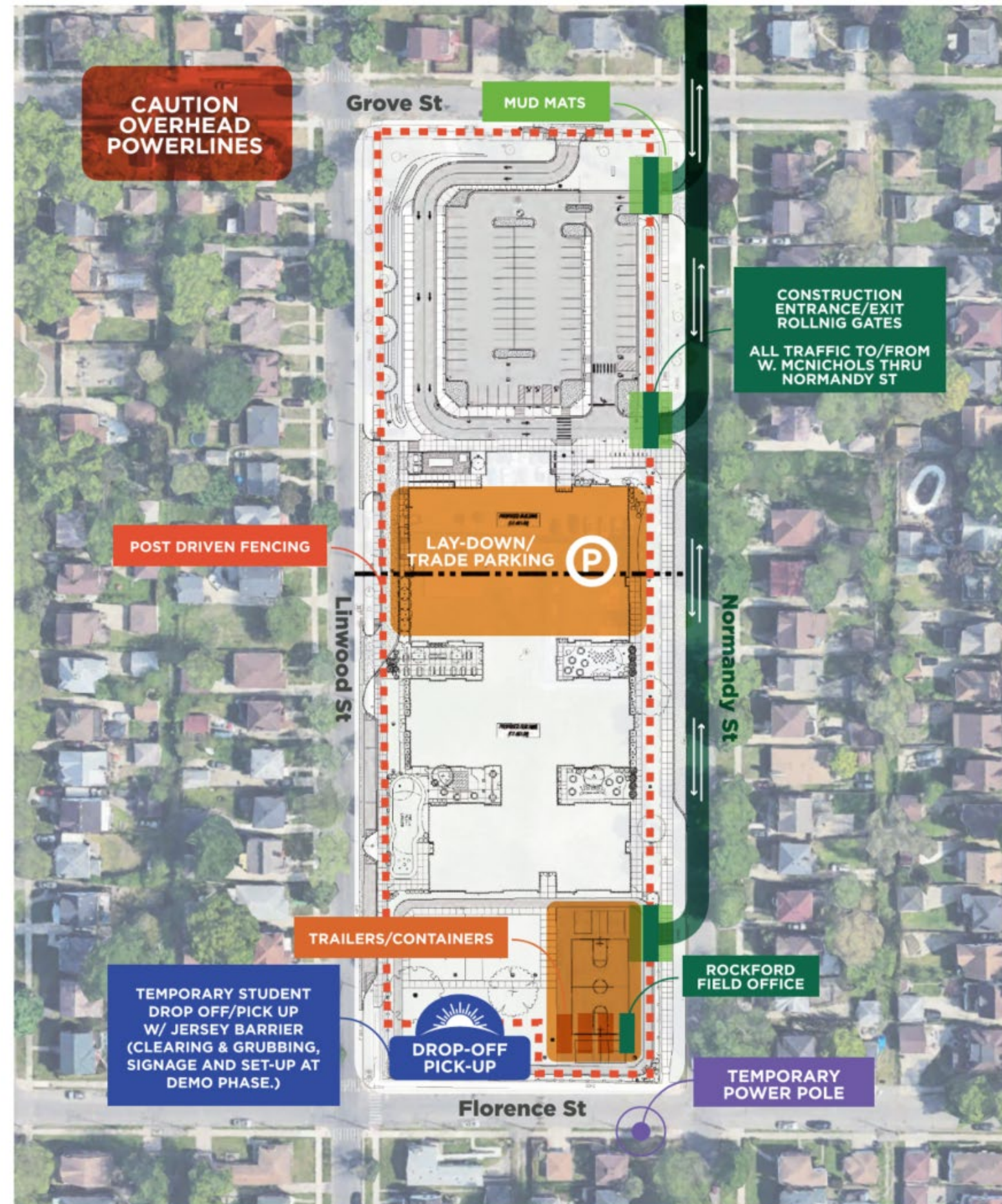






PHASE 1 – LATE FALL 2024

- Abatement (October start)
- Building Demolition (December start)



PHASE 2 – SPRING 2025

- Site Work
- Utilities

PHASE 3 – FALL 2025 thru SPRING 2027

- Building Structure
- Interior Finishes
- Balance of sidewalks, exterior improvements & pavement



DPS - Phase 3 PRELIMINARY BUILDING PLAN



Questions & Answers

FACILITY MASTER PLAN
**ENGAGEMENT
MEETING**

DETROITK12.ORG/FMP



JOIN OUR CONTACT LIST

Red
Robeson
Malcolm X
Academy



Join our Contact List!

<https://bit.ly/DPSCDFacility-JoinOurList>



FACILITY MASTER PLAN
**ENGAGEMENT
MEETING**

DETROITK12.ORG/FMP

CONTACT US

FacilityMasterPlan@detroitk12.org

REBUILDING DPSCD



FACILITY MASTER PLAN
**ENGAGEMENT
MEETING**

DETROITK12.ORG/FMP

