

ELKAY®

SPECIFICATIONS

APPENDIX A

EZH2O® Bottle Filler Station with Filtered Single LZ Cooler Models Enhanced LZS8WSP & LZS8WSSP LZSDWSSP & LZSDWSP

RATED FOR INDOOR USE ONLY

PRODUCT SPECIFICATION

Unit shall include an electric water cooler with bottle filling station. Refrigerated Models shall deliver 8 GPH of 50°F of drinking water at 90°F ambient and 80°F inlet water. Non-Refrigerated Models shall deliver non-chilled drinking water. Lower unit shall have pushbar activation. Bottle filling unit shall include an electronic sensor for touchless activation with an automatic 20-second shut-off timer. LED light illuminating the water dispensing area, brightening as water is being dispensed. Shall include a Green Ticker™ displaying count of plastic bottles saved from waste. Bottle filler shall provide a 1.1 - 1.5 gpm flow rate with laminar flow to minimize splashing. Shall include the WaterSentry® Plus 3000-gallon capacity filter, certified to NSF/ANSI 42 & 53, with visual filter monitor to indicate when replacement is necessary. Unit shall automatically detect a new filter and reset visual filter monitor accordingly. Unit shall have the ability to turn off refrigeration system as needed, in addition to self diagnosing system issues and display messages related. Shall include integrated silver ion anti-microbial protection in key areas. Unit shall meet ADA guidelines. Unit shall be a lead-free design which is certified to NSF/ANSI 61 and 372 and meets Federal and State low-lead requirements. Unit shall be certified to UL399 and CAN/CSA 22.2 No. 120 & is FCC compliant.



STANDARD FEATURES

- Sanitary, touchless activation with auto 20-second shut-off (Bottle Filler)
- Easy-touch front and side pushbar controls (Cooler)
- Visual User Interface display includes:
 - Innovative Green Ticker™ counts bottles saved from waste
 - LED Visual Filter Monitor shows when replacement is necessary
- WaterSentry® Plus 3000-gallon capacity Filtration System, certified to NSF/ANSI 42 & 53 (Lead, Class 1 Particulate, Chlorine, Taste & Odor)
- Integrated Silver Ion Anti-microbial Protection in key areas
- Quick Fill Rate: 1.1 gpm (Refrigerated models); 1.5 gpm Non-refrigerated models)
- Laminar Flow provides minimal splash
- Available with Flexi-Guard Safety or Vandal-Resistant bubbler (Option at additional cost, includes "VR" code in model no.)
- Real Drain System eliminates standing water
- Cooler panel finishes: Light Gray Granite Vinyl Clad Steel or Stainless Steel
- Automatic filter status reset with each filter change

COOLING SYSTEM (Refrigerated Models only)

- Compressor: hermetically-sealed, reciprocating type, single phase. Sealed-in lifetime lubrication.
- Condenser: Fan cooled, copper tube with aluminum fins. Fan motor is permanently lubricated.
- Cooling Unit: Combination tube-tank type. Self-cleansing. Continuous copper tubing with stainless steel tank. Fully insulated with EPS foam which meets UL requirements for self-extinguishing material.
- Refrigerant Control: Refrigerant R134a is controlled by accurately calibrated capillary tube.
- Temperature Control: Electronic temperature control requires no adjustment
- Temperature Sensing Device: Fully solid-state temperature sensing has no moving parts.

Refrigerated Models

- LZS8WSP
- LZS8WSSP
- LZS8WSVRLP
- LZS8WSVRSP

These units are replacing LZS8WSP, LZS8WSSK, LZS8WSVRLK, and LZS8WSVRSK, Respectively.

Non-Refrigerated Models

- LZSDWSP
- LZSDWSSP

These units are replacing LZSDWSP, LZSDWSSK, Respectively.

CONSTRUCTION

- Stainless Steel basin with integral drain
- Galvanized structural steel cooler chassis provides structural integrity
- Stainless Steel bottle filler wrapper with ABS plastic alcove
- Cooler cabinet available as Light Gray Granite Vinyl Clad Steel or Stainless Steel (additional cost) construction
- Flexi-Guard® Safety Bubbler utilizes an infused anti-microbial pliable polyester elastomer to prevent accidental mouth injuries. Flexes on impact.
- Vandal-resistant bubbler (option at additional cost) is one-piece, heavy-duty construction

Replacement Filters: Available as Singles and Multi-packs.

Order part numbers:

- 51300C (single)
- 51300C_3PK (three)
- 51300C_12PK (twelve)
- 51300C_24PK (twenty-four)
- 51300C_48PK (forty-eight)

Warranty: 5 year limited warranty on the unit's refrigeration system. Electrical components and water system are warranted for 12 months from date of installation or 18 months from factory shipment, whichever date falls first.

CAPACITIES CHART										
Model	Voltage / Hertz	Chilling** Capacity	F.L. Amps	Rated Watts	Approx. Ship Wt.	ADA Compliant	UL399 and CAN/CSA 22.2 No. 120 Certified	NSF/ANSI 61 and 372 Certified	NSF/ANSI 42 and 53 Certified (Filter only)	FCC Compliant
LZS8WS(VR)LP	115V / 60 Hz	8 GPH	4.2	370	71 lbs.	•	•	•	•	•
LZS8WS(VR)SP	115V / 60 Hz	8 GPH	4.2	370	71 lbs.	•	•	•	•	•
LZSDWSSP	115V / 60 Hz	–	1.0	15	45 lbs.	•	•	•	•	•
LZSDWSP	115V / 60 Hz	–	1.0	15	45 lbs.	•	•	•	•	•

Color code of (L) Light Gray Granite or (S) Stainless Steel cooler panels. **Based on 80°F inlet water & 90°F ambient air temp for 50°F chilled drinking water.

In keeping with our policy of continuing product improvement, ElKay reserves the right to change specification without notice. Please visit elkay.com for the most current version.

2222 Camden Court
Oak Brook, IL 60523
630-572-3192
elkay.com

This specification describes an ElKay product with design, quality and functional benefits to the user. When making a comparison of other producer's offerings, be certain these features are not overlooked.

© 2016 ElKay
SPEC00259 (03/2016)

EZH20® Bottle Filler Station
with Filtered Single LZ Cooler
Models Enhanced LZS8WSLP & LZS8WSSP
LZSDWSSP & LZSDWSLP

ELKAY®
ROUGH-IN DIMENSIONS

RATED FOR INDOOR USE ONLY

IMPORTANT! INSTALLER PLEASE NOTE:

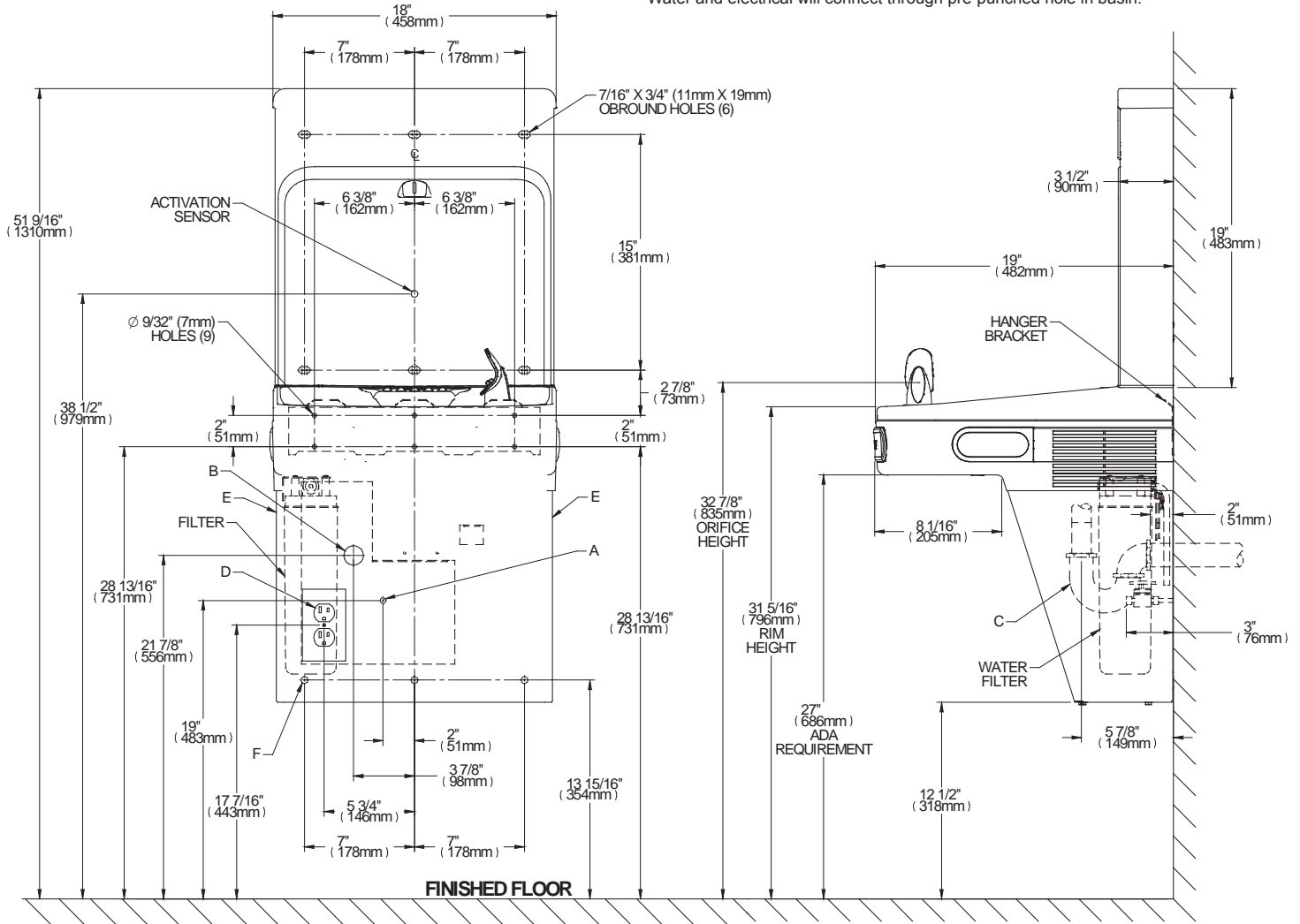
These units are designed and built to provide water to the user which has not been altered by materials in the cooler waterway. The grounding of electrical equipment such as telephone, computers, etc. to water lines is a common procedure. This grounding may be in the building but may also occur away from the building. This grounding can cause electrical feedback into a water cooler creating an electrolysis which results in a metallic taste or an increase in the metal content of the water. This condition is avoidable by installing the cooler using the proper materials as shown.

NOTICE

This water cooler must be connected to the water supply using a dielectric coupling. The cooler is furnished with a non-metallic strainer which meets this requirement. The drain trap which is provided by the installer should also be plastic to completely isolate the cooler from the building plumbing system.

Model Shown with Flexi-Guard Safety Bubbler

Bottle Filler unit will mount on bracket attached to wall by 6 holes (as shown). Water and electrical will connect through pre-punched hole in basin.



REDUCE HEIGHT BY 3 INCHES FOR INSTALLATION OF CHILDRENS ADA COOLER

LEGEND:

- A = Recommended Water Supply location. Shut-off Valve (not furnished) to accept 3/8" O.D. unplated copper tube. Up to 3" (76mm) maximum out from wall.
- B = Recommended Waste Outlet location. To accommodate 1-1/4" nominal drain. Drain stub 2" (51mm) out from wall.
- C = 1-1/4" Trap (not furnished).
- D = Electrical Supply (3) Wire Recessed Box Duplex Outlet.
- E = Insure proper ventilation by maintaining 6" (152mm) minimum clearance from cabinet louvers to wall.
- F = 7/16" (11mm) Bolt Holes for fastening to wall.

NOTE: Installations Must Use Ground Fault Circuit Interrupter (GFCI).

Job Name: _____
Model: _____ Qty. _____
Contact: _____
Approval Signature: _____
Notes: _____